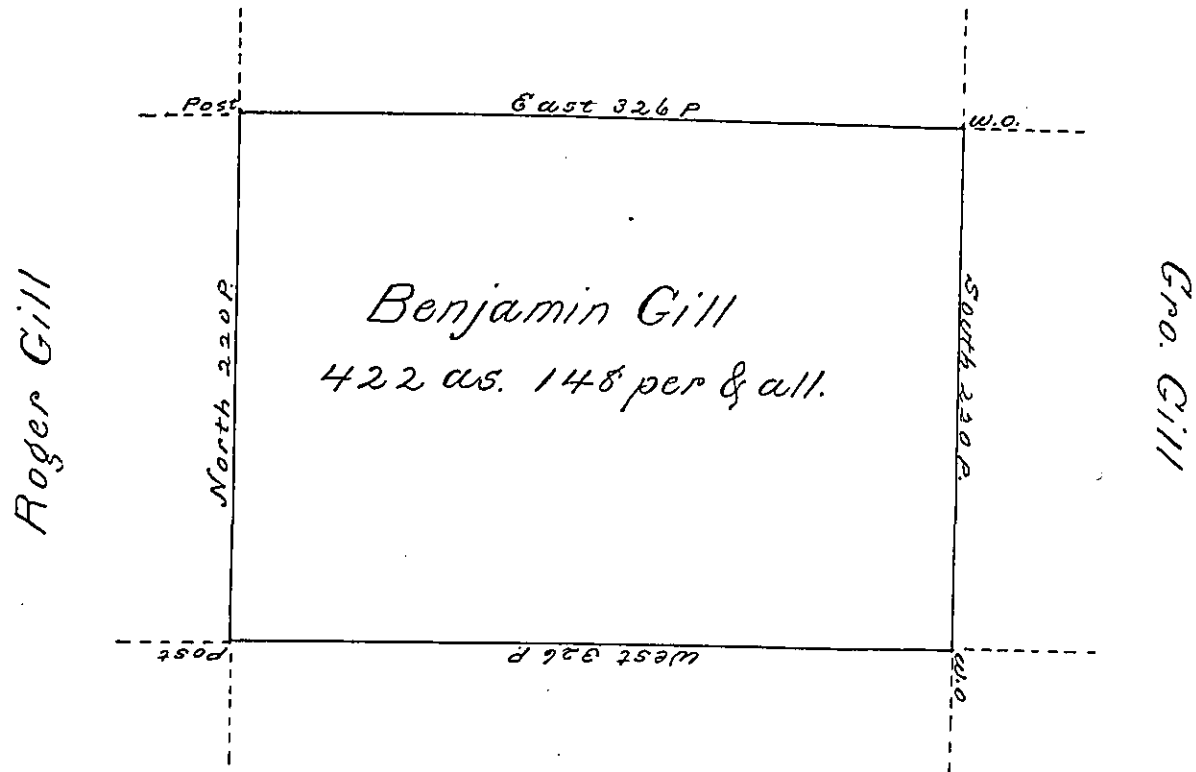


Saml. Gill



Roger Gill

Geo. Gill

Henry Gill

Situate on the East side of French Creek
 in Allegheny County containing 422 acres & 148
 perches and alle. of Six pcent for Roads &c. Sur-
 veyed the 20th. day of June 1795 In pursuance
 of a warrant dated 10th. day of April 1793.

Wm. Power Lydr.

To Paul Brodhead Esqr }
 Surveyor General }

IN TESTIMONY that the above is a copy of the original remaining on file in
 the Department of Internal Affairs of Pennsylvania, made
 conformably to an Act of Assembly approved the 16th day of
 February, 1833, I have hereunto set my Hand and caused
 the Seal of said Department to be affixed at Harrisburg,
 this third day of October 1899

James W. Patton
 Secretary of Internal Affairs.